



# ***GSC80 SERIES***

## **MINICRAWLER CRANE**



**MAX** 17,600 lbs @ 8' 2" Rated Capacity

**51' 6" @ 440 lbs** Max. working radius

**KG** 16,204 lbs Vehicle Weight

**16' 5" x 5' 4" x 7' 2"** Dimensions(LxWxH)

# GSC80 SERIES



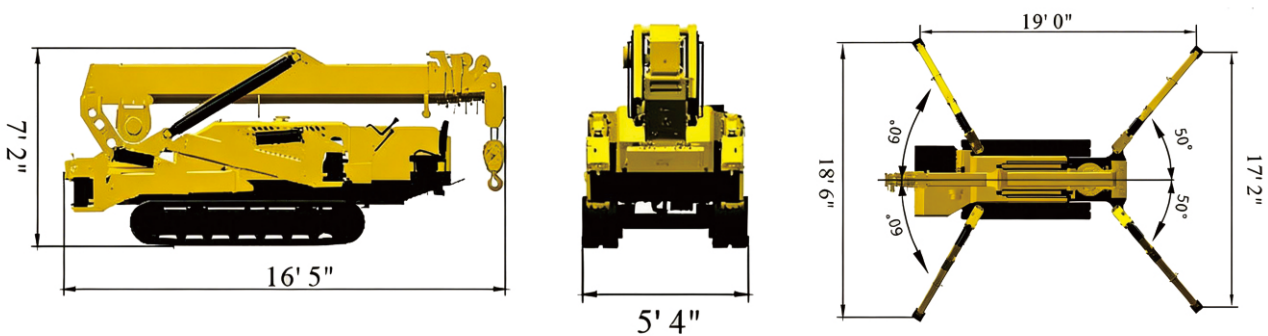
## Load Moment Indicator

Anti-tipping Alarm

Anti-Two-Block

Real-time Dashboard

## KEY SPECIFICATIONS



## FEATURES

- ✓ **Rough Terrain Capability**  
Rock-solid stability on any job site.
- 🏠 **3-Mode Safety Interlock (Travel / Outrigger / Boom)**  
Prevents tipping or mechanical damage caused by misoperation.
- 🛡️ **Automatic Leveling System**  
Instant setup for any job site.
- 📶 **Wireless Proportional Control**  
Precision control for travel, outriggers, and boom operations.
- ⚙️ **Equipped with Danfoss Proportional Valves**  
Ultra-smooth, pinpoint control for all functions.



# GSC80 SERIES



3.28 ft SEARCHER HOOK  
MAX LIFTING WEIGHT 2,205 lbs



9.84 ft HYDRAULIC JIB  
MAX LIFTING WEIGHT 1,760 lbs

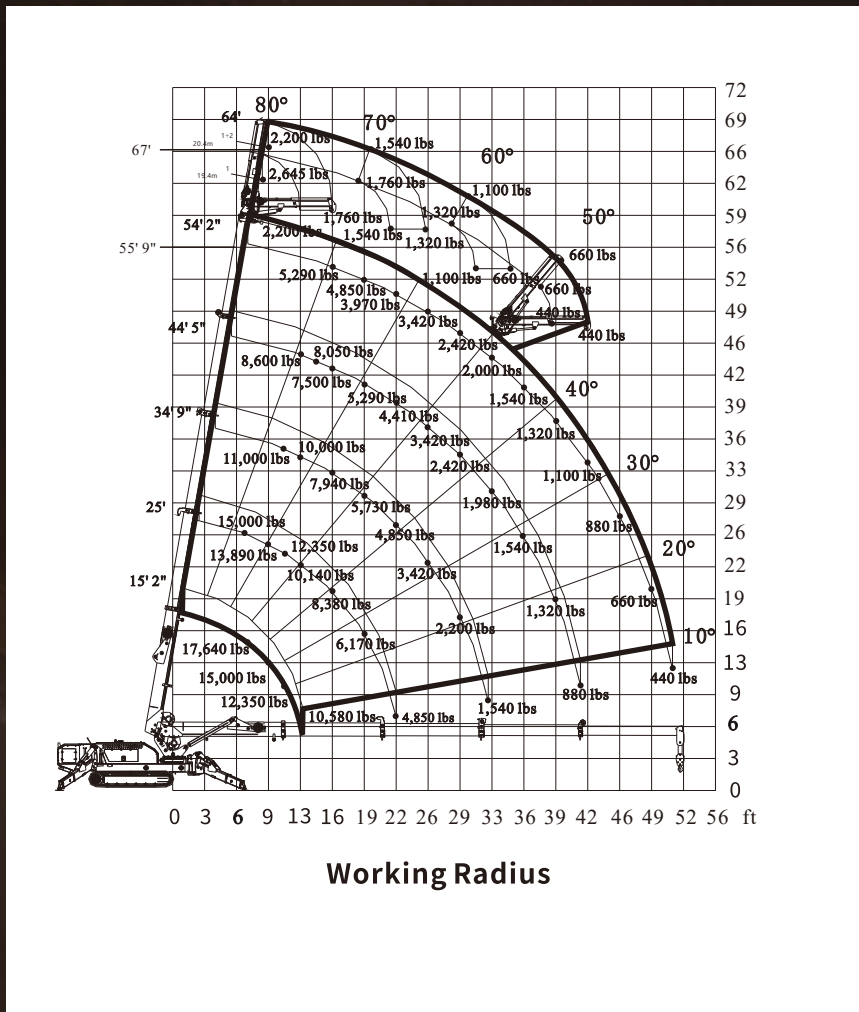


6.56 ft FLY JIB  
MAX LIFTING WEIGHT 1,760 lbs



WORK PLATFORM  
MAX LOAD 440 lbs

## Load Chart



GLASS MANIPULATOR



# GSC80 SERIES

## Technical Specifications

Model		GSC80DM	GSC80D	GSC80E
<b>DUAL POWER</b>		<b>DIESEL</b>		<b>LITHIUM BATTERY</b>
		<b>AC ELECTRIC</b>		<b>AC ELECTRIC</b>
Model		4TNV88 (YANMAR)		Lithium battery
Starting method		Electric Start		DC motor (with battery pack)
Maximum Output		33.8 HP		26.8 HP
Fuel / Battery Capacity		11.9 gal		80V / 460Ah
Electric Motor		Configurable to Local Standards (110V - 480V)		
<b>Crane Capacity</b>		<b>17,600 lbs @ 8' 2"</b>		
<b>Max.Working Radius</b>		<b>51' 6" @ 440 lbs</b>		
<b>Max.Lifting Height (On ground)</b>		<b>55' 9"</b>		
Winch System	Hook Speed	0 - 32.8 FPM (4-Part Line)		
	Wire Rope	15/32" x 328'		
Telescopic System	Boom Type	U type automatic 5 section		
	Boom Length	15' 2" - 54' 2"		
	Telescopic Length / Speed	Approx. 34 sec (fully extended)		
Boom Lift Speed	Boom Angle / Speed	0 - 80° / 24.5sec		
<b>Slewing System</b>	<b>Slewing Angle / Speed</b>	<b>0-360°Continuous / 29sec</b>		
Outrigger	Outrigger	Manual operation for the first section,automatic for the 2,3section		
	Max Extended Dimensions	19' x 18' 6" x 17' 2"		
Traction system	Travel Method	Hydraulic Motor; High / Low Speed		
	Travel Speed	0 - 0.87 / 0 - 1.8 mph		
	Gradability	20°		
	Track Footprint (L x W)	7' 2" x 14"		
	Track Ground Pressure	7.0 psi	7.4 psi	
Operating System	<b>Remote Control Type / Range</b>	<b>Proportional Wireless / 328 ft</b>		
	<b>Outriggers</b>	<b>Proportional Wireless</b>		
	<b>Travel boom</b>	<b>Manual operation</b>	<b>Dual-Mode (Wireless &amp; Manual)</b>	
	Dimension(LxWxH)	16' 5" x 5' 4" x 7' 2"		
Hydraulic Oil Tank Capacity		26.4 gal		
Vehicle weight		16,204 lbs	16,535 lbs	
Safety System		Level, LMI, Three Color Lamp, Emergency Stop Button, 3-Mode Safety Interlock (Travel / Outrigger / Boom), One-Touch Hook Auto-Stow		

📍 5900 Balcones Drive STE 100 Austin TX, USA 78731

☎ +1(716)547-1292

✉ [glt@au-machinery.com](mailto:glt@au-machinery.com)

🌐 [www.gltlifts.com](http://www.gltlifts.com)