



GSC50 SERIES

MINICRAWLERCRANE



MAX **11,000 lbs @ 5' 11"** Rated Capacity

40' 8" @ 330 lbs Max. working radius

KG **9,921 lbs** Vehicle Weight

13' 5" × 4' 3" × 6' 5" Dimensions(LxWxH)

GSC50 SERIES



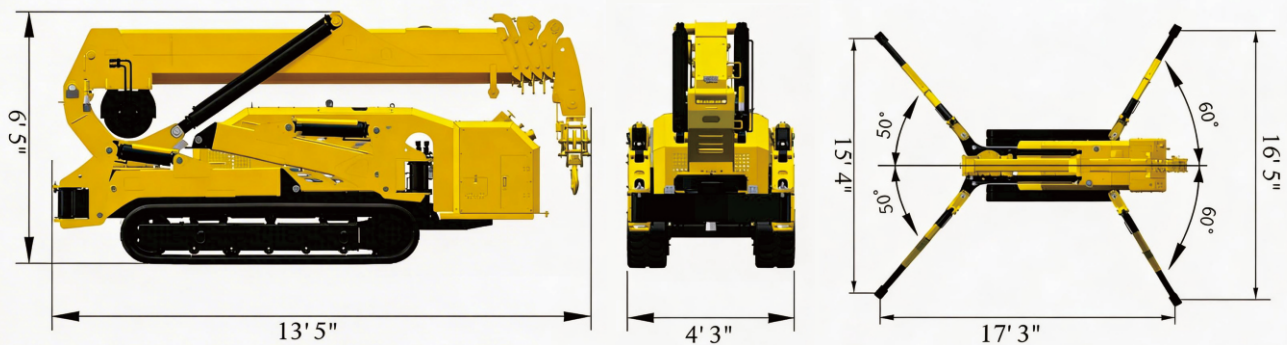
Load Moment Indicator

Anti-tipping Alarm

Anti-Two-Block

Real-time Dashboard

KEY SPECIFICATIONS



FEATURES

- ✓ **Variable geometry outriggers**
Stable setup in any workspace or around obstacles.
- 🚫 **3-Mode Safety Interlock (Travel / Outrigger / Boom)**
Prevents tipping or mechanical damage caused by misoperation.
- 🛡️ **Automatic Leveling System**
Instant setup for any job site.
- 📶 **Wireless Proportional Control**
Precision control for travel, outriggers, and boom operations.
- ⚙️ **Equipped with Danfoss Proportional Valves**
Ultra-smooth, pinpoint control for all functions.



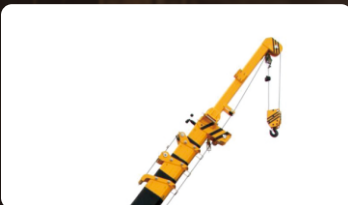
GSC50 SERIES



3' 1" SEARCHER HOOK
MAX LIFTING WEIGHT 1,655 lbs



9' 10" HYDRAULIC JIB
MAX LIFTING WEIGHT 1,545 lbs

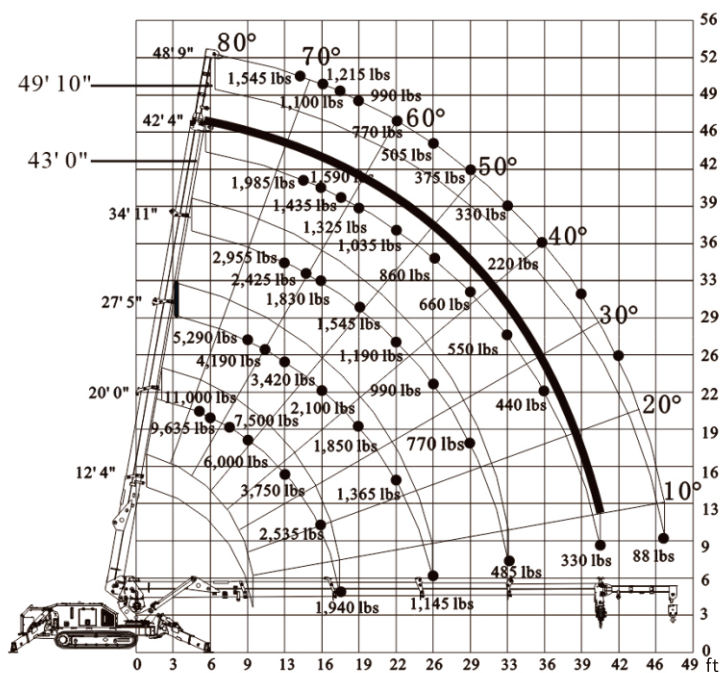


6' 7" FLY JIB
MAX LIFTING WEIGHT 1,545 lbs

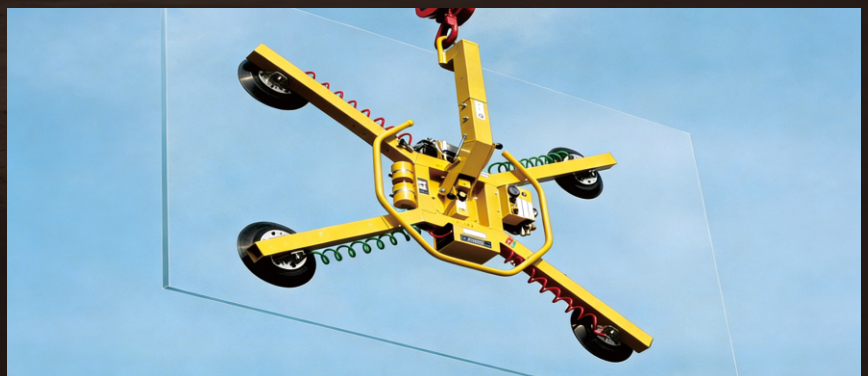


WORK PLATFORM
MAX LOAD 440 lbs

Load Chart



Working Radius



GLASS MANIPULATOR



GSC50 SERIES

Technical Specifications

GSC50 Spider Crane		
DUAL POWER		DIESEL
		AC ELECTRIC
Crane Capacity		11,000 lbs @ 5' 11"
Max.Working Radius		40' 8" @ 330 lbs
Max.Lifting Height (On ground)		43'
Winch System	Hook Speed	0 - 49.2 FPM (4-Part Line)
	Wire Rope	3/8" x 328' (Max)
Telescopic System	Boom Type	U type automatic 5 section
	Boom Length	12' 4" - 42' 4"
	Telescopic Length / Speed	30' / 27 sec
Boom Lift Speed	Boom Angle / Speed	0~80° / 17 sec
Slewing System	Slewing Angle / Speed	0-360°Continuous / 30 sec
Outrigger	Outrigger	Manual adjustment for the 1section, automatic for the 2,3
	Maximum Extended	15' 4" x 17' 3" x 16' 5"
Traction system	Travel Method	Hydraulic Motor; High / Low Speed
	Travel Speed	0 - 0.93 mph
	Gradeability	20°
	Track Footprint (L x W)	5' 10" x 12"
	Track Ground Pressure	5.9 psi
Diesel Engine	Model	3TNV80 (YANMAR)
	Displacement	1.331 L
	Maximum Output	19.6 HP @ 2400 RPM
	Starting Method	Electric start
	Fuel / Tank Capacity	Diesel / 6.6 gal
	Starting Operating	-5°C ~ 40°C
	Battery Capacity	12 V 80 AH
Operating System	Remote Control Type / Range	Proportional Wireless / 328 ft
	Boom/Travel	Proportional Wireless
	Engine / Electric Motor	Proportional Wireless
Electric Motor		Configurable to Local Standards (110V - 480V)
Dimension (L x W x H)		13' 5" x 4' 3" x 6' 5"
Vehicle weight		9,921 lbs
Safety System		Level, LMI, Three Color Lamp, Emergency Stop Button, 3-Mode Safety Interlock (Travel / Outrigger / Boom), One-Touch Hook Auto-Stow

📍 5900 Balcones Drive STE 100 Austin TX, USA 78731

✉️ glt@au-machinery.com

☎️ +1(716)547-1292

🌐 www.gtlifts.com