

GSC50-U

THE TRUE ALL-TERRAIN MULTI-TOOL

The Ultimate Multi-Tool for Modern Construction.



11,000 lbs
Crane Capacity



55' 10" @ 440 lbs
Max. Working Radius



59'
Max. Lifting Height



15,870 lbs
Vehicle Weight



Rugged

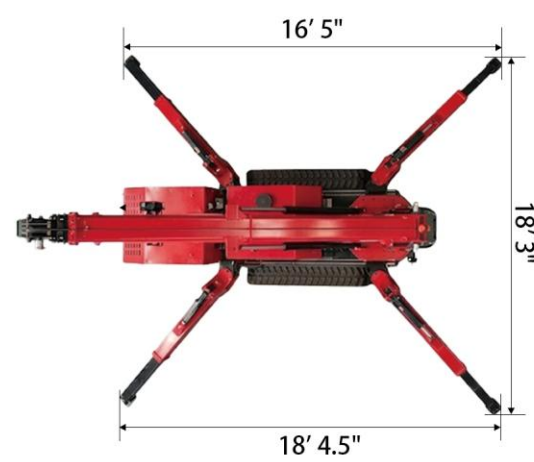
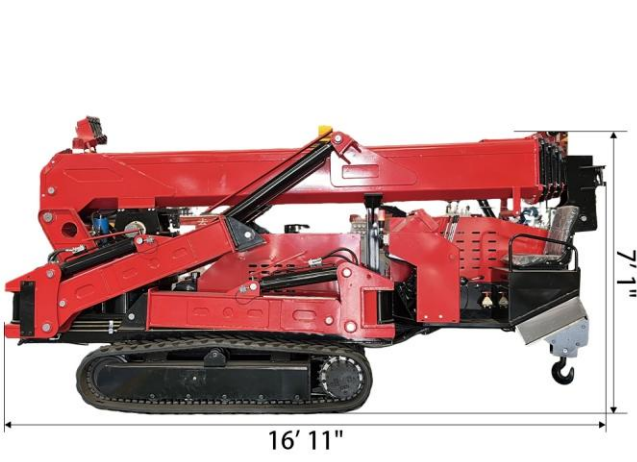
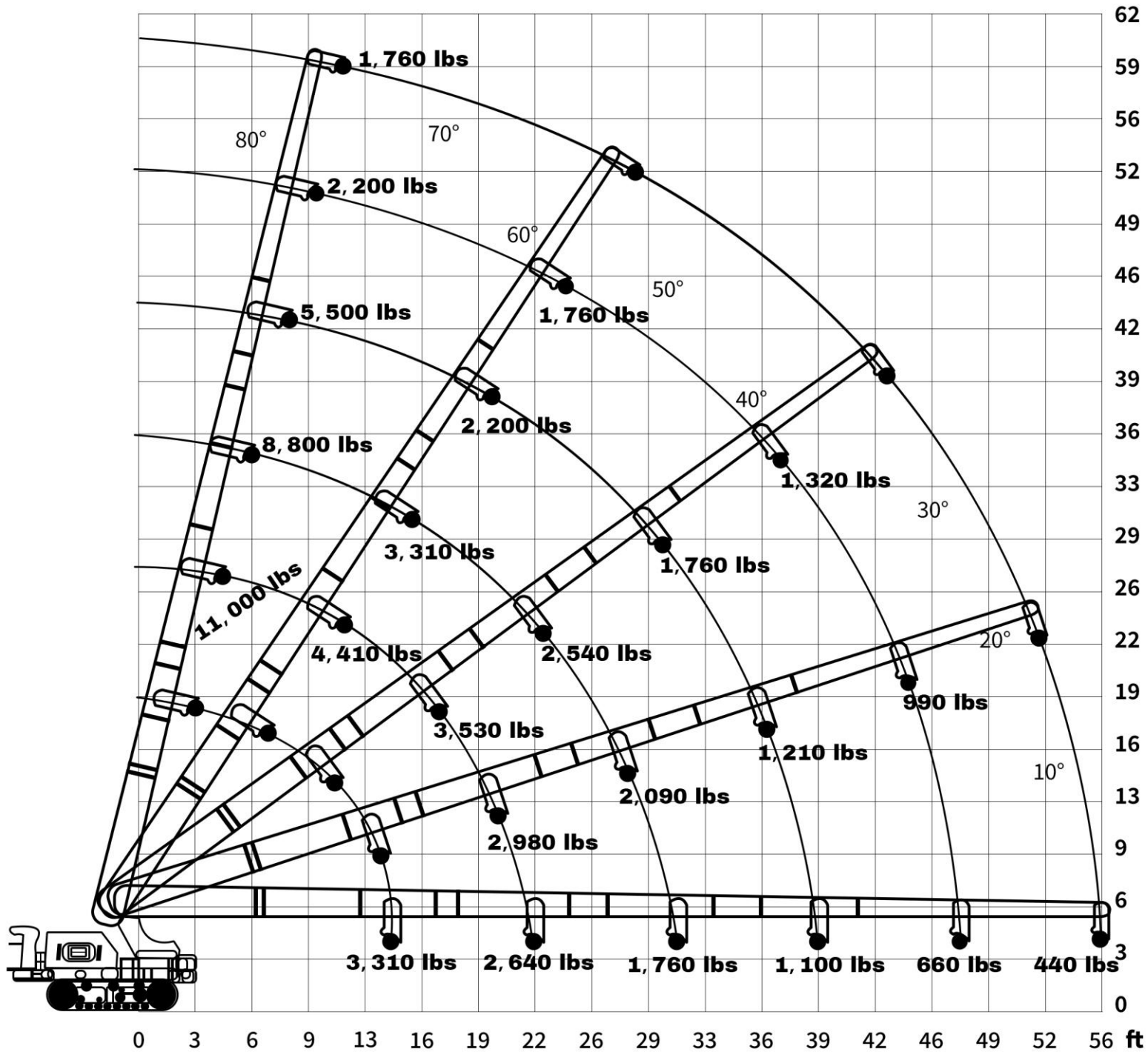


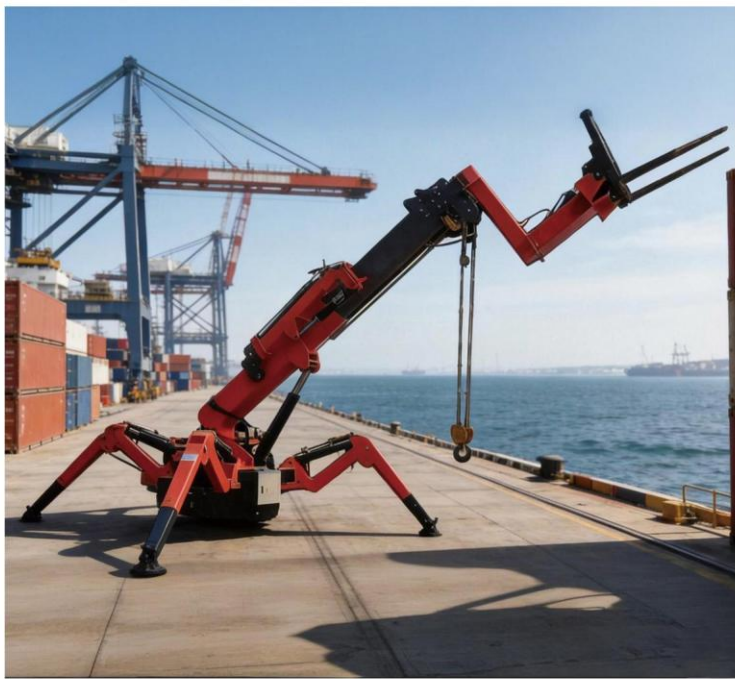
Field-Proven



Multi-Purpose

RATED LIFTING CAPACITIES & WORKING





Forklift Head

Quickly transforms into an all-terrain forklift, **built for** heavy pallets and bulk material handling.



Glass Manipulator

Precision glass curtain wall installation with stable, secure vacuum suction technology.

**A True
All-terrain Multitool
GSC50-U**

Grapple/Claw

Heavy-duty gripping power, **engineered** for irregular scrap and pipe handling.

Work Basket

Stable aerial work platform:
Direct access to your core work zone.



WHY CHOOSE GLT?

**INTEGRATED SMART LMI:
REAL-TIME STABILITY MONITORING THAT
ACTIVELY PREVENTS TIPPING.**



3-MODE SAFETY INTERLOCK (TRAVEL / OUTRIGGER / BOOM)

Prevents tipping or mechanical damage caused by misoperation.

360° CONTINUOUS ROTATION

Infinite maneuverability in confined spaces.

VALUE

Manufacturer Direct Pricing
1-Year Comprehensive Warranty
24/7 Support



REAL POWER. NO COMPROMISE.

TECHNICAL SPECIFICATIONS

GSC50-U MINI CRAWLER CRANE

| | |
|---------------------------------------|--|
| DUAL POWER | DIESEL |
| | AC ELECTRIC |
| Diesel Engine | Model: 4TNV98C-WSY (YANMAR) EPA |
| | Starting Method: Electric Start |
| | Maximum Output: 70 HP / 2500 RPM |
| | Fuel / Tank Capacity: Diesel / 10.6 gal |
| | Displacement: 3.319 L |
| | Starting Operating: -15°C~40°C |
| Crane Capacity | 11,000 lbs |
| Max.Working Radius | 55' 10" @ 440 lbs |
| Max.Lifting Height (On ground) | 59' |
| Max.Lifting Height (Un ground) | 213' |
| Winch System | Hook Speed: Low Speed: 19.7 FPM; High Speed: 36.1 FPM (4-part line) |
| | Wire Rope: 3/8" x 230' (max) |
| Telescopic System | Boom Type: U type automatic 6 section |
| | Boom Length: 13' 1" - 55' 9" |
| | Telescopic Length / Speed: Approx. 26 sec (fully extended) |
| Boom Lift Speed | Boom Angle / Speed: 0~75° / 42 sec |
| Slewing System | Slewing Angle / Speed: 360° Continuous Slewing / 35 sec |
| Outrigger | Outrigger: Manual adjustment for the 1,2 section |
| | Maximum Extended Dimensions: 18' 3" (F) x 18' 4.5" (S) x 16' 5" (R) |
| Traction System | Travel Method: Hydraulic motor |
| | Travel Speed: (Low Speed: 0-0.5 mph / High Speed: 0-1.2 mph) |
| | Gradeability: 20° |
| | Track Footprint(L x w): 7' 3" x 11.8" |
| Operating System | Remote Control Type / Rang: Wireless / 328 ft |
| | Outriggers: Manual Operation |
| | Travel: Dual-Mode (Wireless & Manual) |
| | Boom: Dual-Mode (Wireless & Manual) |
| Electric Motor | Voltage: Configurable to Local Standards (110V~480V) |
| | Power / Speed: 14.8 HP / 970 RPM |
| Dimension | L x W x H: 16' 11" x 4' 7" x 7' 1" |
| Hydraulic Oil Tank Capacity | 18.5 gal |
| Vehicle Weight | 15,870 lbs |
| Safety System | Level,Three Color Lamp,Emergency Stop Button,3-Mode Safety Interlock (Travel / Outrigger / Boom) |