



# GTB66 TOWABLE BOOM LIFTS

*Articulating Boom with A Telescopic*

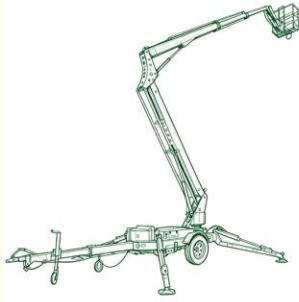


72'2"  
Max Working  
Height

36'1"  
Max Horizontal  
Outreach

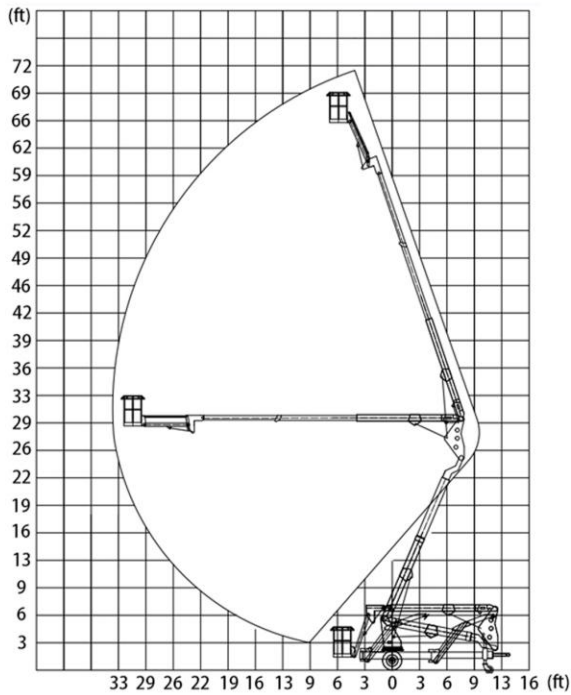
8,378 lbs  
Vehicle Weight

21'4" x 5'11" x 7'3"  
Dimension  
(L x W x H)



# Working Performance

## Working Range Diagram



## ARTICULATION

### Articulating boom with a telescopic:

Excellent up-and-over clearance for navigating obstacles.

### Articulating Lower Boom:

Uses heavy-duty linkages to provide exceptional up-and-over clearance, easily bypassing fences, guardrails, and landscaping.

### Telescopic Upper Boom:

Extends linearly for precise horizontal outreach and smooth, direct positioning to the target workarea.

## Application Scenarios



### Tree Trimming

Precision pruning for safety and aesthetics



### Tree Care

Safe access for inspections and maintenance



### Team Operations

Two-person workflows for complex projects

# GTB66 Trailer-Mounted Boom Lift Technical Specifications

## Technical Data

Max working Height	72' 2"
Max platform Height	65' 7"
Max Horizontal Outreach	36' 1"
Rotation Angle	359° Non-continuous Rotation
Platform Dimensions	35.4" × 27.6" × 43.3"
Max platform Capacity	440 lbs
Dimension(L × W × H)	21' 4" × 5' 11" × 7' 5"
Overall Outrigger Footprint	22' 4" × 22' 4"
Max Towing Speed	110 mph
Weight	8,378 lbs

## Technical Parameter

## Power Options

Engine (diesel)	Kubota Diesel Engine
Engine(gasoline)	B&S Gasoline Engine
Electric Motor	110V / 220V AC
Battery	Lead-Acid Battery / Lithium-ion Battery
Manual Emergency pump	Manual Operation

## Safety Devices

- Automatic Leveling Control
- Sensor of Outrigger
- Alarm Device
- Emergency Stop Button
- Travel / Outrigger /Boom Three-Way Interlock System

## Optional Devices

- 360°Continuous Rotation
- 160°Platform Rotation Angle
- Assist Drive System
- Dual-Power