



# GTB52 TOWABLE BOOM LIFTS

*Articulating Boom with A Telescopic*



**59' 1"** Max Working Height



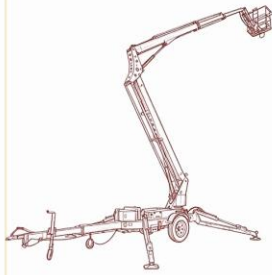
**34' 5"** Max Horizontal Outreach



**5,732 lbs** Vehicle Weight



**18' 8" x 5' 7" x 7' 3"** Dimension(LxWxH)



# Feature

## 1. Articulating boom with a telescopic:

Excellent up-and-over clearance for navigating obstacles

## Articulating Lower Boom:

Uses heavy-duty linkages to provide exceptional **up-and-over** clearance, easily bypassing fences, guardrails, and landscaping.

## Telescopic Upper Boom:

Extends linearly for precise **horizontal outreach** and smooth, direct positioning to the target work area.

## 2. Easy Towing:

Effortlessly towed by a pickup or SUV, saving you professional hauling costs and time.

## 3. Compact & Access:

Ultra-narrow stowed width fits through standard doors and tight aisles.

## 4. Advanced Safety:

Anti-tipping, outrigger interlocks, and overload alarms prevent rollover accidents.

## 5. Auto-Leveling:

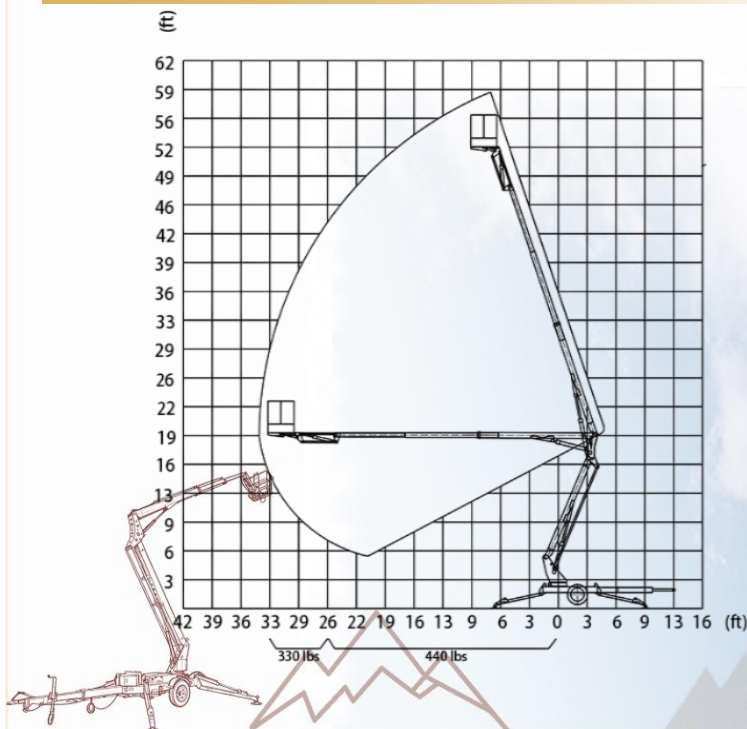
One-touch automatic outrigger leveling maximizes jobsite setup efficiency.

## 6. Dual-Power Options:

Flexible power configurations including Gasoline, Diesel, AC, and Battery.



## Working Range Diagram



# GTB52 Trailer-Mounted Boom Lift

## Technical Specifications

### Technical Data

### Technical Parameter

<b>Max Working Height</b>	<b>59' 1"</b>
<b>Max Platform Height</b>	<b>52' 6"</b>
<b>Max Horizontal Outreach</b>	<b>34' 5"</b>
<b>Rotation Angle</b>	<b>359° Non-continuous</b>
<b>Platform Dimensions</b>	<b>35.4" x 27.6" x 43.3"</b>
<b>Max Platform Capacity</b>	<b>440 lbs</b>

<b>Dimension(L x W x H)</b>	<b>18' 8" x 5' 7" x 7' 3"</b>
<b>Overall Outrigger Footprint</b>	<b>13' 9" x 14' 9"</b>
<b>Max Towing Speed</b>	<b>68 mph</b>
<b>Weight</b>	<b>5,732 lbs</b>

### Power Options

<b>Engine (diesel)</b>	<b>Kubota Diesel Engine</b>
<b>Engine (gasoline)</b>	<b>B&amp;S Gasoline Engine</b>
<b>Electric Motor</b>	<b>110V / 220V AC</b>
<b>Battery</b>	<b>Lead-Acid /Lithium-ion</b>
<b>Manual Emergency Pump</b>	<b>Manual Operation</b>

### Safety Devices

- **Automatic Leveling Control**
- **Sensor of Outrigger**
- **Alarm Device**
- **Emergency Stop Button**
- **Travel / Outrigger / Boom Three-Way Interlock System**

### Optional Devices

- **360°Continuous Rotation**
- **160°Platform Rotation Angle**
- **Assist Drive System**
- **Dual-Power**